



Carving Instructions



Carve a circular opening from the bottom of your pumpkin.



Clean out the seeds and strings with the Scraper Scoop™. Scrape the area you plan to carve until the pumpkin wall is about **1" thick**.



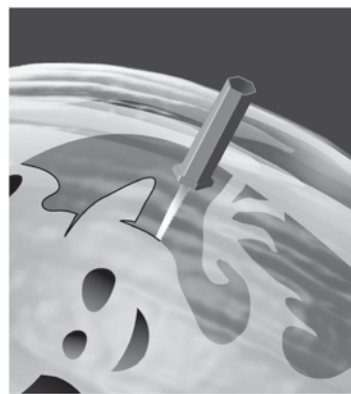
Wet the pattern.



Apply it to the pumpkin while wet. Get it as smooth as possible.



While it's still wet, cover the pattern with plastic wrap, overlapping all the edges, and smooth it down.



Hold the pumpkin in your lap. Saw at a 90° angle to the pumpkin with gentle pressure. The saw is breakable if used incorrectly.

If the pattern becomes fragile or ragged as you carve, patch over it with more plastic wrap, and continue carving. Make the outermost cuts last.

Carving Tools



The Starter Saw is for cutting the lid and carving simple designs.



The Scraper Scoop™ quickly cleans out seeds and strings and thins the walls of thick pumpkins. This makes carving easier, cleaner and faster.



The Detail Saw has fine teeth and a sharp point for precision carving.



The Ergo Saw features an ergonomic handle for comfortable carving. It saws easily through the pumpkin and is for general and intricate carving.



The Poker can be used for pattern transfer.



Place your carved pumpkin over a battery-operated light.* Watch your carving come to life!

*Sold separately at retail outlets.
©Signature Brands, LLC. All rights reserved.